



Road-clearance technology for professionals

Graders | Wheel loaders | Tractors

Cranab®  **Slagkraft®**

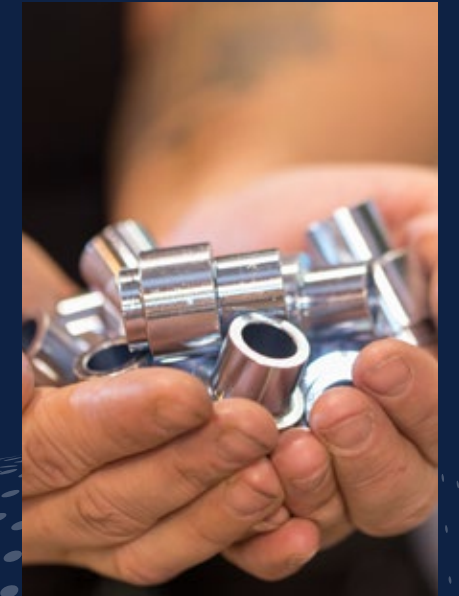
FASSI GROUP

Robust products for safer roads

Slagkraft is Scandinavia's leading manufacturer of road clearance machines. Throughout almost 50 years of development, manufacture and meetings with customers, we've built up a product range that is renowned and appreciated by professional users in Europe and beyond.

Our road clearance machine system comprises power packs, cranes and mowers. The range is module based and, depending on the type of machine used to carry the equipment, all or parts of the system are used. In addition to their great flexibility, Slagkraft's products are renowned for their reliability, ergonomics and consistently high quality.

We build road clearance machines for the people who make our roads safer. Well-mown ditches, embankments and roadsides mean better visibility and a lower accident risk. There is a clear link between road maintenance and road safety. We have everything you need to blaze a trail for road safety.



Slagkraft's road clearance equipment is used for professional work when maintaining roadsides, ditches and embankments in various environments. No road is too small. No road is too big.

Solutions for many different needs.

Slagkraft's road clearance equipment has many possible combinations. The system is suitable for multiple types of carrier machines, machine sizes and areas of application. The products have world-class handling characteristics and can withstand consistently demanding use for long periods.

Slagkraft's equipment was developed for wheel loaders, graders and other machines such as agricultural tractors. It is a full product range from power packs to flails, including control systems. We deliver solutions suited to the machine, and the environment and the job.

→ WHEEL LOADERS

For machines from 10 tonnes and upwards.

Slagkraft's products are ideal for wheel loaders large or small.

→ GRADERS

Clearance makes graders more versatile.

We have solutions with both underslung and side-mounted heads.

→ OTHER MACHINES

Want to use a different carrier machine for clearance?

Slagkraft's products can be used on e.g. agricultural tractors, backhoe loaders and excavators.



Which solution is best for you?

Select power pack, crane and flail according to your specific needs.

Slagkraft’s modular system consists of power packs in various sizes, cranes with reaches from 5 to 11 metres and a full range of flails for brush and grass clearance.

Because the right product combination is important for achieving the best results, we’ve drawn up a straightforward product guide that shows which power packs, cranes and flails go together with different carrier machines. The guide is located at the bottom of the page.

AN INTRODUCTION TO SLAGKRAFT’S ROAD CLEARANCE SYSTEM

Our power packs are highly-developed, reliable and strong. They are fuel-efficient and meet all current EU Stage V emission requirements. The power packs are well balanced and available for forward installation on wheel loaders and tractors, and side or underslung installation on graders.

Our cranes are robust, have reaches up to 11 meters and are very responsive. The latest models are based on the same technology as Cranab’s popular forwarder cranes and are fitted, among other things, with protected hose routing and high crane pillars for best visibility. We supply both single and double-telescope cranes.

Our powerful flails protect both the environment and equipment thanks to hardy side plates, chain curtains and rubber sections. The substantial sloping covers keep the flails free from grass and brushwood.

The machine operator controls all equipment in the comfort and safety of the cabin. The joystick is ergonomic and all machine information is presented clearly on a colour touch screen, where settings are also entered. Thanks to responsive hydraulics and a modern proportional control system, operating characteristics are excellent.

VEHICLE	POWER PACKS	WXP	CRANE				SH- Chain flails					TW - Off-road flails		V - flails	
Wheel loaders from 10 tonnes	W70			SC7			SH125	SH150	SH170			SH150-60-TW90	SH150-80-TW90	V130	V160
Wheel loaders from 13 tonnes	W180			SC7	SC8		SH125	SH150	SH170	SH190	SH210	SH150-60-TW90	SH150-80-TW90	V130	V160
Grader - side mounted	G180					SC160	SH125	SH150	SH170	SH190	SH210	SH150-60-TW90	SH150-80-TW90	V130	V160
Wheel loaders from 10 tonnes		WXP	SC5	SC7			SH125	SH150				SH150-60-TW90	SH150-80-TW90	V130	V160

These are the recommended combinations. Depending on the carrier machine and specific needs, other adaptations are possible.



MAKE THE RIGHT CHOICE RIGHT AWAY

Contact us or a dealer for personal service when choosing your equipment.

You can find your nearest dealer at www.slagkraft.com

“I’ve been operating machines all my life and I’m happy to say that Slagkraft has been utterly hassle-free; it just keeps on going.”

Torbjörn Nilsson - Fällmyra AB
CAT 938/W180/SC8



POWER PACKS

Strong, efficient power packs that get the job done through every tough shift – day after day.

Slagkraft's muscular power packs are eco-friendly, user-friendly and have world-class operating characteristics. The power packs all have well-built diesel engines from Caterpillar – one of the world's leading engine manufacturers. The engines are efficient, and meet all applicable EU Stage V emission requirements.

Our power packs are well engineered and robust. They are easy to maintain and service, and are quickly installed on the carrier machine.

Every power pack is combined with a crane and a flail. To select the right power pack, begin with the type of carrier machine, the size of the machine and the crane model you intend to use. Select the crane based on the desired reach, the type of flail and its working width.

OUR POWER PACKS



W70 • Our smallest power pack with excellent power and performance. Power output 55 kW/75 hp. No DEF fluid required.



W180 • Powerful, new generation power pack for wheel loaders. Powered by a strong CAT C4.4 diesel engine that delivers 129kW/175hp.



G180 • A robust power pack, ideal for use on graders. Based on the same technology and with the same performance as the W180.

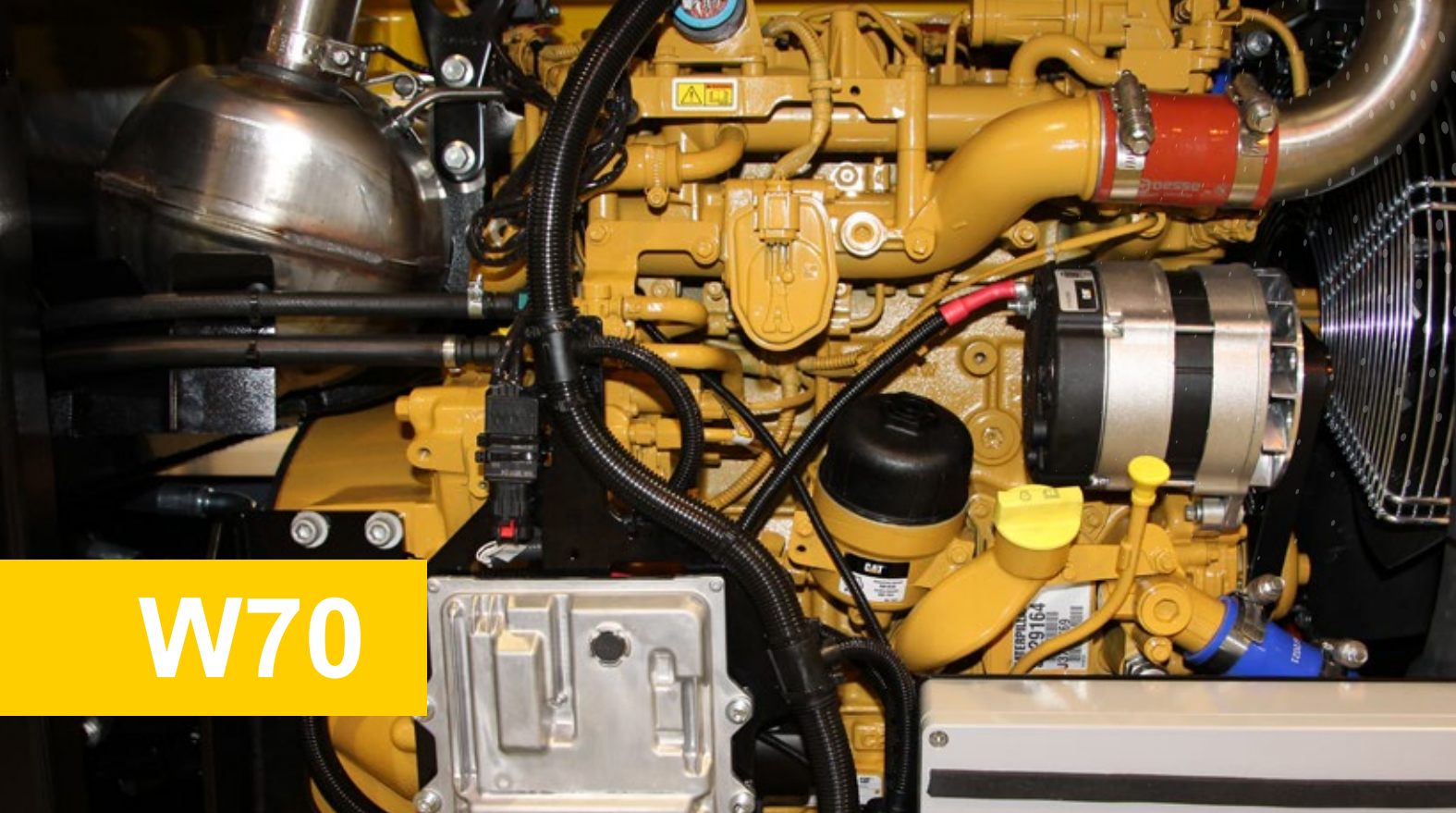


→ CAPACITY (kW)

Our muscular power packs have outputs from 55 kW till 129 kW

For further technical specifications, see page 26





W70

W70 – a power pack for slightly smaller machines

Our smallest diesel power pack, the W70 is ideal for smaller carrier machines. The pack is primarily intended for use for clearance on the road network and in areas that demand agility.

DESIGN

The power pack is designed and engineered to be reliable and compact. It has a low build-height, and its optimum centre of gravity provides the best visibility and balance.

ENGINE

The W70 is powered by a Cat C3.6 diesel engine and meets EU Stage V emission requirements. The engine has no DEF system and requires no DEF fluid or similar additives as the engine output is 55 kW.

HYDRAULICS

The components for the hydraulic system are selected with an eye to great reliability, responsiveness and good operating characteristics. They are also easy to access for service and maintenance.

LOW BUILD-HEIGHT AND GOOD VISIBILITY

The very good visibility provided by the power pack's low build-height is similar to when using a bucket.

CRANE MOUNTING

The crane attachment is mounted low to provide better visibility and stability.

ENGINE

The W70 is fitted with a CAT EU Stage V engine that meets the more stringent emission standards regarding the environment, reliability and productivity.

HYDRAULIC OIL COOLER

The W70 has a small, efficient cooler located on the front for good accessibility. A reversible fan blows through and cleans the cooler periodically when no cooling is necessary.



SERVICE AND MAINTENANCE

The diesel engine's service points are located at the front. The power pack is fitted with quick couplings for replenishing hydraulic oil and emptying the hydraulic tank. It's easy to replace filters, and an indicator shows when it's time to do so.

DIESEL TANK

The tank with its generous, 154-litre volume means longer operating time between refuels.

→ DID YOU KNOW THAT...

... THE LOW-BUILT POWER PACK PROVIDES VISIBILITY IS SIMILAR TO WHEN USING A BUCKET?

We have improved the design of the W70. The build-height is only 945 mm in the pack's central section, and together with the SC7 crane, which is open around the crane pillar, and the main boom, visibility is excellent.

... THE W70 has an electronic master switch.

This makes the start routine easier for the machine operator, and the risk of forgetting to switch off the machine is reduced.

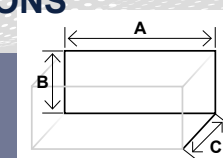
→ W70 - POSSIBLE COMBINATIONS

W70 COMBINATIONS

The W70 is ideal together with the SC7, our latest crane model. This is a flexible solution with a reach of up to 7.5 metres together with the SH 170 flail.

→ DIMENSIONS

- A WIDTH: 238 cm
- B HEIGHT: 111 cm
- C DEPTH: 126 cm





W180 / G180

W180 & G180 – similar, but not identical power packs.

Our biggest diesel power packs, the W180 and G180, are very similar. The main difference is that the W180 is used on wheel loaders and for underslung installation on graders, while the G180 is side-mounted on graders. Both packs are truly robust and powerful.

DESIGN

The W180 and G180 are designed and engineered to provide performance, reliability and service friendliness. While everything is brought together and protected, it remains easily accessible.

ENGINE

The heart of the power pack is a Caterpillar C4.4 diesel engine that delivers 176 hp (129 kW) and 750 Nm (at 1400 rpm). The engine is fuel-efficient and meets EU Stage V emission requirements.

THE NEW GENERATION

The W180 and G180 form part of the new generation power packs with e.g. low crane mounting, EU Stage V engines, improved component locations and smart solutions. The result is excellent weight distribution and balance, great operating characteristics and very good visibility.

VALVE ASSEMBLY

The power pack's valve assembly is located close to the crane mounting and is both well protected and easily accessible for service and maintenance.



CRANE MOUNTING

The crane attachment is mounted low to provide better visibility and stability.

LIGHTING

The W180 has multiple lighting points at the front as standard, while lighting in the G180 is on the side. This means the surroundings can be seen better and work is made safer. The lighting is supplemented by lights on the crane.

THE TANK

The power pack's tank as a new panel for easy access when replenishing diesel and DEF. Protected by a lockable hood. The tank holds 200 litres of diesel.

TWIN BATTERIES

The W180 and G180 are equipped with powerful battery packs comprising twin batteries. The well-protected pack is installed on a pull-out, slide-rail shelf for ease of service and maintenance access.



ENGINE

Both the W180 and G180 are powered by a new Caterpillar C4.4 diesel engine that delivers 175 hp / 129 kW. The engine meets applicable emissions standards according to EU Stage V.



OIL COOLER

The cooler is located next to the tool holder. It has internal fans for maximum protection and optimum cooling.



GOOD TO KNOW!

MOUNTING

The main difference is that the W180 is used for wheel loaders and underslung installation on graders, while the G180 for side installation on graders.

SERVICE AND MAINTENANCE

The power pack is designed for ease of maintenance, whether it concerns replenishing fluids, changing filters or daily checks.



POSSIBLE COMBINATIONS

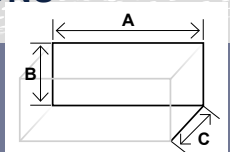
The W180 can be combined with the SC7 and SC8 crane models. The G180 is combined with the SC160.

Depending on the choice of crane, most of our flails are also suitable. See table on page 6.



DIMENSIONS

- A WIDTH: 238 cm
- B HEIGHT: 142 cm
- C DEPTH: 171 cm



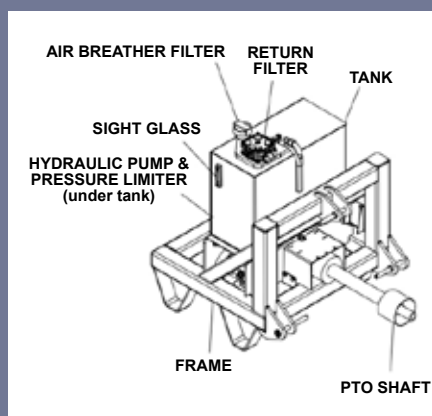


WXP

A smart solution that eliminates the need for a power pack to drive the road clearance equipment. The WXP connects directly to the wheel loader's hydraulic system.

The WXP system is our simplest solution suitable for light road clearance. It was developed for use on wheel loaders together with the SC5, our smallest crane, or the somewhat larger SC7 and a flail with a narrower clearance width. The WXP system is designed for carriers with either dual circuit (fixed flow) or LS (variable flow) system and that meet the correct pressure and flow specifications.

Instead of choosing one of the W70 or W180 diesel power packs, the WXP system's own base unit is connected directly to the wheel loader's hydraulic outlet. The well-balanced base unit comes complete with the crane mounting and all connections. Just plug it in and start clearing.



Pump pack

Pump pack

Slagkraft's 3P-150 is a high pressure pump pack version for three-point lifts. The function of the pump pack is to deliver oil to a hydraulic tool. The pack consists mainly of a PTO shaft, hydraulic pump, pressure limiter, a tank, return filter and breather filter.



The WXP is a complete and eminently suitable solution for light road clearance.

Stefan Holgersson, Cranab



STRONG AND SUFFICIENTLY LARGE

EASY CLEARANCE FOR PROFESSIONALS

The WXP system is the perfect choice when needs may be sufficiently great to use professional equipment, but not to upgrade to a diesel power pack with a bigger crane and flail.



COMPLETE SOLUTION

SIMPLE AND EFFICIENT

The WXP system's base unit was engineered to be well-balanced and low weight. The unit is equipped with all necessary connections. The WXP comes complete with the associated control system.

CRANES

Our cranes let you reach a long way safely.

Our cranes are manufactured to meet high quality and reliability standards. With technical solutions such as four-point linkage and twin slew systems, they are built to meet the requirements for efficiency and reliability necessary for professional use.

The modern SC7 and SC8 cranes are based on the latest technology available in Cranab's popular forwarder cranes. Its characteristics are high reliability, leading material choices, protective design for hoses and hydraulic cylinders alike, and an optimised geometry.

Our cranes are offered with various reaches to suit road clearance conditions and natural surroundings, and the needs of each user.

→ SCOPE OF WORK

Our unique slew system allows work to be done on both sides of the machine.

*Standard on the SC5, SC7 and SC8.
Optional on the SC160.*



SC5 • A small, flexible crane with a reach of up to 6.2 metres and a SH150 flail.



SC7 • A modern crane with a high crane pillar, short main boom and protected hoses. For clearing minor roads.



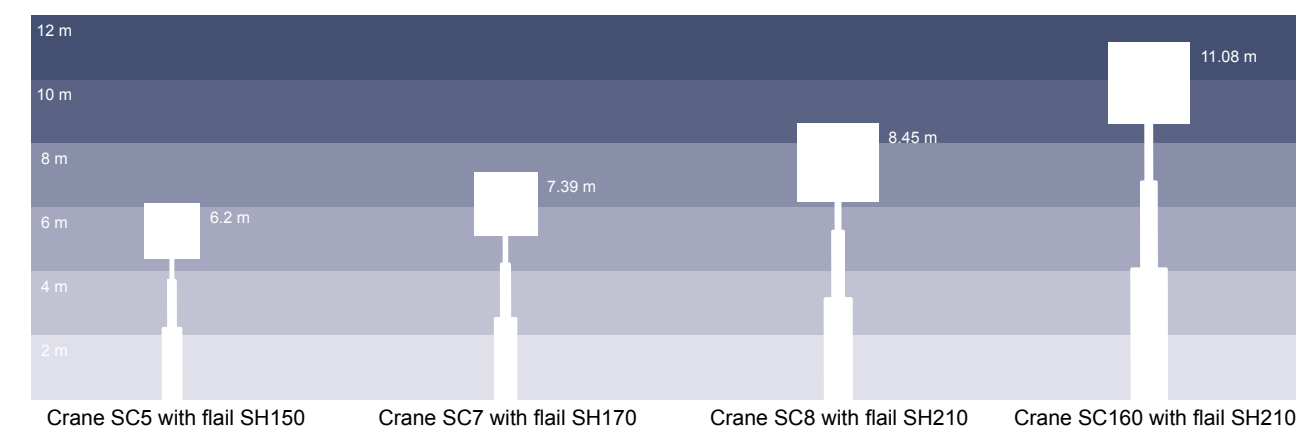
SC8 • A crane with the latest technology, a high crane pillar and protective design. Reach up to 8.5 metres.



SC160 • A robust crane with a long reach of up to 11 metres with double-telescope technology. For clearing major road networks.

Max reach with each respective flail

Reach is illustrated based on our recommended choice of the biggest flail.





SC5 / SC160

The SC5 and SC160 – well-proven, reliable cranes

Slagkraft's SC5 and SC160 cranes are reliable, well-built and make brush clearance effective. They are our smallest and largest crane models.

EFFICIENT WORK
Our cranes are manufactured to meet high quality and reliability standards. With technical solutions such as four-point linkage and twin slew systems, they are built to meet the professional user's need for efficiency and reliability.

LEADING REACH
The SC160 is the biggest crane in our range. It has the longest reach of all our cranes. Thanks to its double telescope technology, it can reach up to 11 metres, making it especially useful in jobs where there is a need to reach really far to meet the client's specific clearance requirements.

CAREFULLY SELECTED MATERIAL
We manufacture our cranes using high quality steel, and the welding process is to all intents and purposes robotised. We take great care with our work to achieve the longest service life.

FOUR POINT LINK

The four-point link between the main boom and outer boom give the latter smooth movement and velocity across the entire range. This results in very good working characteristics close to the machine.



STRONG MATERIAL
Our cranes are built from high quality steel, and to all intents and purposes are welded by robots. The cranes are stable and strong.

UNIQUE SLEW SYSTEM
The SC5 comes fitted as standard with our unique slew system that allows the crane to be used on both sides of the machine. A highly effective, practical and safe solution. The slew system is an option on the SC160.

ROBUST MOUNTING
The crane mounting is robust and well engineered for efficient operation, stability and smooth slewing. It adds to the good properties of the crane pillar and main boom.

EQUIPPED FOR FLAILS
Our robust hitches are suitable for easy installation on the flail as well as attachment to the crane tip.

→ GREAT REACH

REACHES EVERYWHERE
Our cranes are available with different reaches, all to meet your needs. The SC5 has a reach of up to 6.2 metres, while the SC160 reaches up to 11 metres with flail.

→ SC160

DOUBLE TELESCOPE
The SC160 is the longest crane in the Slagkraft range. It is equipped with a double telescope to achieve a maximum reach of no less than 11 metres.

→ WXP

WXP - THE SOLUTION WITHOUT A POWER PACK
The SC5 fits our flexible WXP system, which connects to the carrier machine's hydraulics without the need for a power pack. Read more on page 14.



SC7 / SC8

The SC7 and SC8 – with high crane pillars for good visibility

The SC7 and SC8 cranes belong to our latest crane generation, wholly suited to Slagkraft's products and professional road clearance.

RECOGNISED TECHNOLOGY

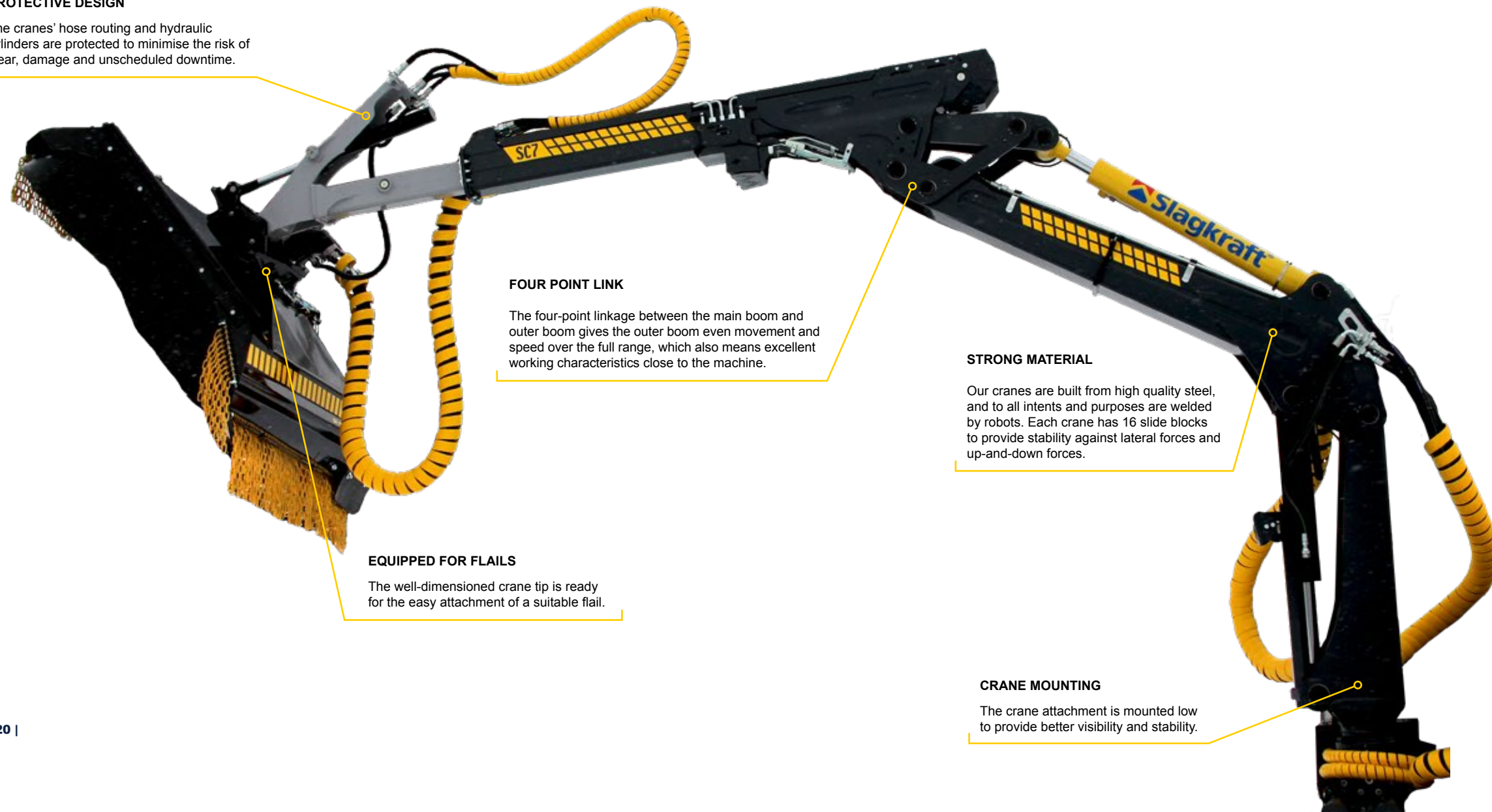
The SC7 and SC8 are based on technology and properties taken directly from Cranab's world-renowned forwarder cranes. Outstanding features include high reliability, a leading choice of materials and optimised geometry.

UNIQUE SLEW SYSTEM

The SC7 and SC8 come factory fitted as standard with our unique slew system that allows the crane to be used on both sides of the machine. With a front-mounted power pack, it is possible to clear both to the left and right of the machine in the same direction of travel. A highly effective road-safety solution.

PROTECTIVE DESIGN

The cranes' hose routing and hydraulic cylinders are protected to minimise the risk of wear, damage and unscheduled downtime.



FOUR POINT LINK

The four-point linkage between the main boom and outer boom gives the outer boom even movement and speed over the full range, which also means excellent working characteristics close to the machine.

STRONG MATERIAL

Our cranes are built from high quality steel, and to all intents and purposes are welded by robots. Each crane has 16 slide blocks to provide stability against lateral forces and up-and-down forces.

EQUIPPED FOR FLAILS

The well-dimensioned crane tip is ready for the easy attachment of a suitable flail.

CRANE MOUNTING

The crane attachment is mounted low to provide better visibility and stability.

→ SC7 – SC8

EASY TO SERVICE

Thanks to a crane design that protects hoses and cylinders, the maintenance requirement is very small. The lubrication points are remotely and easily accessible.

→ LIGHTING

WELL-POSITIONED LIGHTING

Our cranes, together with the power packs, come with three well-positioned lighting points as standard. There are two lights on the outer boom, and one on the crane pillar. There are additional lights on the power pack.

→ VERY GOOD REACH

LARGE WORKING AREAS

Together with our unique slew system and SC crane reaches of 7.3 m for the SC7 and 7.6 m and 8.4 m for the SC8, large work areas can be reached on both sides of the carrier machine.



FLAILS

Our flails let you keep things clear regardless of terrain.

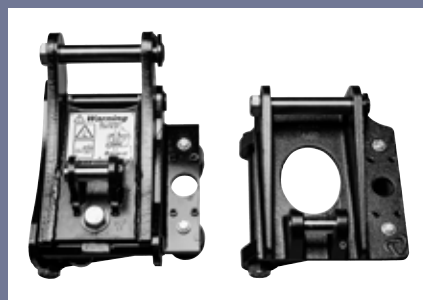
Our flails are highly efficient and engineered for reliability, ease of operation and safety for their surroundings.

Slagkraft offers three flail models, which together are suitable for all areas of application. The V model is a flail for easy grass clearing, while the TW model is intended for off-road clearance in tougher terrain, such as power-line corridors or forestry roads. The SH flail is our best seller and the most common model for roadside clearance.

Both the SH and TW models are chain flails that provide maximum clearing efficiency. They can clear brushwood and shrubs with great precision and

power. The flails are robust, reinforced and soundly welded. Thanks to the tilting hood design and gloss surfaces, no grass, brushwood or shrub waste clings to the flails, making maintenance easy.

The chains are available in two different sizes: 10 mm for grass and brushwood, 13 mm for coarser clearance in terrain such as forest slopes and power-line corridors. Chains are easy to replace, and thanks to the well-dimensioned side covers, the risk of vegetation splatter from the flail is reduced.



Tilt bracket and quick hitch

Attachment for flails

There are different types of hitches for our flails. Tilt hitches in S45 and S60 sizes are available for stable attachment to excavators. The tilt function makes it easy for the machine operator to adjust the flail angle while working.

Quick hitches for quick and easy switching between different flails. A practical solution where the upper section is fixed to the crane and the lower section to each flail.

SH | CHAIN FLAILS

ROADS



The SH model is used for clearance along roadsides, ditches and embankments.



The SH flails are available in five sizes with working widths from 1250 mm to 2100 mm.

TW | OFF ROAD

TERRAIN



The TW model, aka the Off-road flail, is intended for clearance in terrain, power-line corridors and other demanding surroundings. Because it is open on both sides, sweeping back-and-forth motions are possible.



The TW flails are available in two models with a working width of 1500 mm and for different hydraulic motor options.

GRASS



V | FLAILS

The V model is ideal for clearing grass.



The V flails are available in two sizes with working widths from 1300 mm to 1600 mm.

OPERATOR ENVIRONMENT

Because our products form an important part of the operator's workplace, we pay great attention to ergonomics and safety in our development work.

We know how important the work environment is to the machine operator. Shifts are often long and concentration must stay sharp all the time. The machine operator always needs a good overview of the surroundings, and have a full view of edges, signs, railings and poles, all while controlling the road clearance equipment and driving the vehicle.

Thus we put great emphasis on developing and improving our products to make them well balanced, reliable and easy to operate.

CONTROL

The machine's crane and flail are proportionally controlled by a modern, ergonomic joystick. This makes it easier for the operator, who keeps one hand on the steering wheel and operates the machine with the other hand. The starter switch and emergency stop are both located next to the display. For added safety, door switches in the driver's cab prevent operation of the road clearance equipment if the door is opened unintentionally.

MONITORING AND SELECTIONS

The easy-to-view colour touch screen monitors engine and hydraulic functions. On the W70 power pack, it allows the operator to make individual settings for crane speed, engine operating rpm and much more. The location of the display is flexible and can be installed anywhere in the driver's cab.

”

During our design work, we always strive to see things from a driver's perspective.

Per Malmström | Design engineer



Proportional control system
Our highly developed control system is proportional and thus very responsive and precise. The crane and flail are controlled precisely by means of the joystick.

Lighting
The W180 power pack has multiple lighting points at the front as standard, while lighting in the G180 is on the side. This means the surroundings can be seen better and work is made safer. The lighting is supplemented by lights on the crane that illuminate the entire working area.

Colour touch screen with machine information

The colour touch screen is available in various sizes; it monitors engine and hydraulic functions. If the W70 power pack is used, the operator can also use the screen to adjust crane speed, engine rpm and much more; (the same settings on the W180/G180 are entered via the joystick). For the W70, there is also a speed adjustment with overdrive mode. This allows the operator to quickly switch between two speed modes.

Joystick

The ergonomic joystick is equipped with buttons, rollers and a wrist support. An adjustable armrest is standard.



Service & support

Daily checks are simple. Power pack service points such as filters, oil dipstick and battery cover are grouped together and easily accessible from ground level. Crane lubrication points are remotely accessible.

Visibility

The high crane pillars on the SC7 and SC8 provide excellent visibility over the work area. The build height of the W70 power pack provides visibility similar to when using a bucket.

POWER PACKS

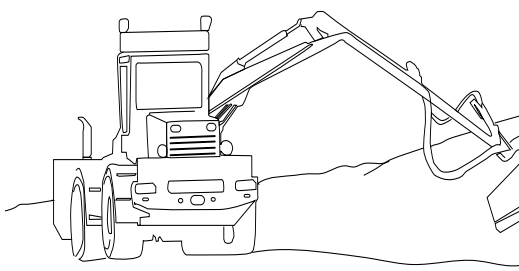
TECHNICAL DATA W70 | W180 | G180 | WXP

MODEL		W70	W180	G180
Diesel engine	Manufacturer	CATERPILLAR		
	Model	C3.6	C4.4	C4.4
	Satisfies exhaust emissions requirements	EU STAGE V	EU STAGE V	EU STAGE V
	Cylinders	4	4	4
	Total displacement (litres)	3.62	4.4	4.4
	Injection system	Electronic		
	Intake system	Turbocharger with inter-cooler	Twin turbocharger with intercooler	Twin turbocharger with intercooler
	Max output (kW / hp / rpm)	55.4 / 75.3 / 2400	129.4 / 176 / 2200	129.4 / 176 / 2200
	Max torque (Nm/rpm)	424 / 1200	750 / 1400	750 / 1400
Hydraulic system	Pump, flail	Rexroth A20VO60	Rexroth A11VO75	Rexroth A20VO95
	Max pressure (bar)	285	350	380
	Filter	10 µm	10 µm absolute	10 µm absolute
	Crane pump	Rexroth A20VO60	Sauer-Danfoss Series 45 / 74cc	Rexroth A20VO60
	Max pressure (bar)	250	250	260
	Control valve	Parker P70LS	Parker L90LS	Parker L90LS
Electrical system	Voltage	24V DC	24V DC	24V DC
	Battery capacity	2x60Ah	2x60Ah	2x60Ah
	Alternator	100A	85A	85A
Operating system	Control units	Parker IQAN	Parker IQAN	Parker IQAN
	Control lever	5 pin	5 pin	5 pin
	Warning functions	Oil pressure, engine temp, charge, engine function, emission control, hydraulic oil level, hydraulic oil temp, fuel level		
	Starting and stopping the flail	Proportional with ramp function		
	Throttle control	Electronic		
Weight and volume	Dry weight (kg)	1400	1700	1700
	Diesel tank (litres)	154	200	200
	DEF tank (litres)		15	15
	Hydraulic oil tank (litres)	104	160	160
	Hydraulic system (litres)	130	190	190

MODEL		WXP
Hydraulic system	Working pressure flail (bar)	210-380
	Flow, flail (l/min)	100-170
	Working pressure crane (bar)	210-245
	Flow, crane (l/min)	60-110
	Filter	10 µm
	Control valve	P70 LS or L90 fixed flow dual circuit
	Connections	DIN24
	Optional crane	SC5 SC7 SC8
Operating system	Control units	Parker IQAN
	Control lever	5 pin
	External communication	IQAN GO via Bluetooth
Weight	Standard (kg)	955
	Without counterweight (kg)	606

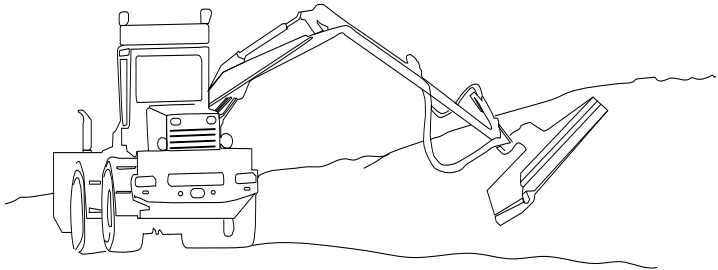
FLAILS

TECHNICAL DATA SH | TW | V

SH CHAIN FLAIL	SH125-60	SH150-80	SH170-90	SH190-110	SH210-125
Working width (mm)	1250	1500	1700	1900	210
Weight (kg)	525	585	665	750	780
Hydraulic motor (cc)	60	80	90	110	125
Hydraulic oil pressure	Min 210 bar / Max 380 bar				
Hydraulic oil flow					
Min (l/min)	100	100	100	100	120
Recommended (l/min)	120	130	130	130	145
Max (l/min)	140	150	160	160	170
TW OFF ROAD	SH150-60-TW-90°	SH150-80-TW-90°			
Working width (mm)	1500	1500			
Weight (kg)	530	540			
Hydraulic motor (cc)	60	80			
Hydraulic oil pressure	Min 210 bar / Max 380 bar				
Hydraulic oil flow					
Min (l/min)	80	100			
Recommended (l/min)	95	130			
Max (l/min)	110	150			
V FLAILS	V130	V160			
Working width (mm)	1310	1598			
Weight (kg)	500	555			
Hydraulic motor	F12-40	F12-40			
Hydraulic oil pressure	Min 210 bar / Max 380 bar				
Hydraulic oil flow	Min 100 - Ideal 130 - Max 150				
Power requirement (kW)	45	45			

Because we are constantly developing and improving our products, we reserve the right to modify the data in the brochure.

We are not responsible for misprints.



Because we are constantly developing and improving our products, we reserve the right to modify the data in the brochure.

We are not responsible for misprints.

CRANES

TECHNICAL DATA SC5 | SC7 | SC8 | SC160

CRANE MODEL	SC5	SC7	SC8	SC160
Reach slewing assembly centre - outermost link	6200 (SH150)	7390 (SH170)	8450 (SH210)	11075 (SH210)
Slew system	Twin rack slewing motor	Twin slew system	Twin slew system	Twin slew system
Slew angle	380°	370°	370°	200°
Boom extension (telescope) (mm)	1430	1700	1700	3700
Recommended flow (l/min)	60-80	60-110	60-120	130-200
Working pressure (bar)	215	235	235	235
Weight including oil (kg)	810	1340	1430	2500



Experience. Technology. Innovation.

Cranab's factories are located in Vindeln, deep in the forests of West Bothnia. It's where we develop and manufacture world-class cranes, grapples and land clearing machines.

At Cranab, we are driven by a genuine passion for forestry and road clearance technology.

We're also driven by our efforts to advance development and a desire for constant improvement.

We are based in northern Sweden, but do business all over the world. We listen carefully to what our customers and users have to say and always respond to market demands. Attentiveness, 60 years of experience and sound technological know-how form the basis of our innovative products.

Cranab, which manufactures products for both Cranab and Slagkraft, is part of the Fassi Group. In addition to Cranab AB, the Swedish arm of the group also includes Vimek AB which manufactures forest machines for non-destructive thinning. Today, the two companies are among the world's leading players in their fields. Their common success factors are the development, manufacture and marketing of leading products and solutions for the latest methods and professional users in forestry and road clearing.



FASSI GROUP